



Our Mission is for
Future and Society



Mitsui & Co. Steel Ltd.

Mitsui & Co. Steel Co., Ltd. is a comprehensive steel trading company that implements integrated management with Mitsui & Co., Ltd., which is active in a diverse range of business areas.

Steel has been described as the “rice of industry”, and the steel industry helped to support Japan as the country’s core post-War industry. The speed of change in the steel industry is accelerating every year, along with the industry’s growth in neighboring Asian countries and technological progress in steel manufacturing, and the industry is facing an increasingly greater competition on a global scale. It is also certain that progress in IT technologies, such as AI, IoT and DT (digital transformation), will bring a dramatic change to the business environment surrounding our company.



President & CEO

Satoru Utsunomiya

For the past half-century, Mitsui & Co.’s iron and steel products business group has engaged in steel business with global customers and steel manufacturers, not just in Japan but worldwide. It conducts business at the local level, and international trading. Our group has grown into a leader of the global steel industry, gaining the patronage of many customers around the world.

However, we refuse to be complacent about our past successes. In April 2018, we carried out a major organizational restructuring as part of efforts to rebuild a growth platform for the next five to ten years.

As a newly rejuvenated company, Mitsui & Co. Steel has set the following four key priorities for Fiscal 2018 onwards.

- (1) We will accurately identify trends in the digital revolution and changes in customer needs and markets. We will work in tandem with our suppliers as partners, as we set about building new business models beyond existing materials trading business, as we pursue further growth through repositioning ourselves in the supply chain.
- (2) As the core group company of the Iron & Steel Products Business Unit of Mitsui & Co., and as an organization for the realization of the Unit’s growth strategies, we will embody the Mitsui & Co. group’s unique comprehensive strengths, business investments and trading capabilities, and construct a new profit structure.
- (3) As our greatest weapon, we will use our comprehensive strengths achieved by utilizing the global customer assets held by Mitsui & Co. group both in Japan and overseas, its global network of branches and offices, and collaborating with a variety of other business units. In doing so, we will capture potential needs and the seeds of new business, both in Japan and around the world, and go on to develop new business.
- (4) We will be an attractive group of professionals that fully utilizes the comprehensive strengths of the Mitsui & Co. group, and each employee will be equipped with specialist expertise. At the same time, we will value an open-minded workplace environment, in line with is the corporate spirit of Mitsui & Co., and be a company that allows every employee to display his or her abilities to the full and achieve job satisfaction.

As we work towards achieving our vision, Mitsui & Co. Steel will continue to set out a variety of initiatives and take on bold new challenges.



Mitsui & Co. Steel Ltd.

「Mitsui & Co. Steel offers substantial services and new value.」

Corporate Vision

Management Philosophy

As a member of the Mitsui & Co. Group, Mitsui & Co. Steel Ltd. aims to become a comprehensive company specialized in iron and steel that contributes to the advancement and development of humankind and society.

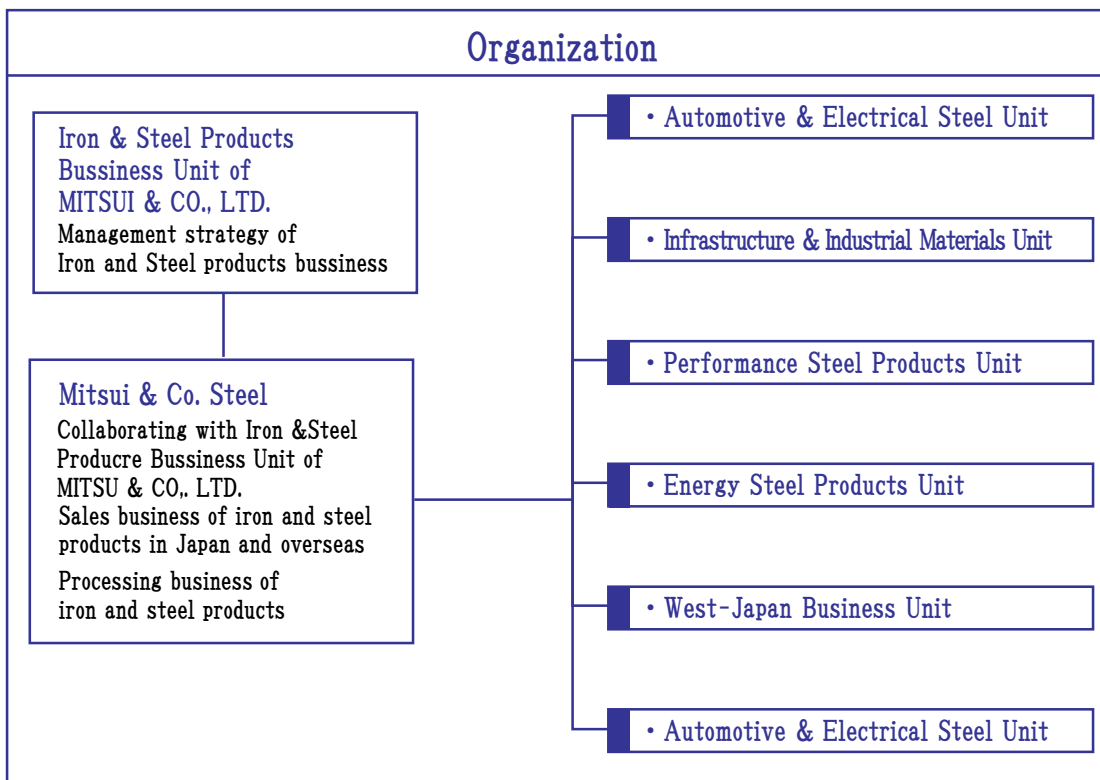
Precept of Conduct

1. With the aim of being "fair" and "humility", we shall conduct sound business activities that will live up to the trust of society.
2. By maximizing joined forces of the Mitsui & Co. Group, we shall achieve and enhance customer satisfaction.
3. By upholding "challenge and innovation" and being "open-mindedness" as our motto, we shall aim to develop attractive human resources.
4. By giving due consideration to safety and global environment, we shall fulfill our corporate social responsibility.

Basic CSR Policy

1. We will continually strive to improve our corporate value by engaging in conscientious activities giving full consideration to the social significance of Mitsui & Co. Steel Ltd.'s presence at any time.
2. We will solidify our management base for practicing CSR and contribute to society through raising the awareness of each employee with regard to CSR and fully reinforcing internal control.
3. We will fulfill our accountability with respect to CSR and continually work to improve our CSR activities.

Organization

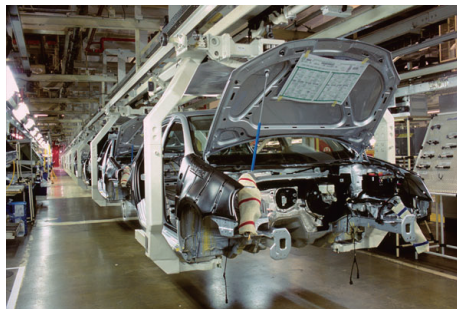


Mitsui & Co. Steel Ltd.

We will contribute to the globalization of the automotive and electrical steel through both logistics and business

Growing together with clients by leveraging joined forces of the Mitsui & Co. Group

By leveraging the network of the Mitsui & Co. Group that extends over Japan and overseas countries, we supply steel sheet for automotives and electrical steel sheet. Moreover, we continue growing toward globalization together with our clients by investing in the service center and the components manufacture.



Making inroads into a new field with environment and resources as keywords

In response to the needs of the times, such as environmental and natural resource issues, eco-friendly cars have emerged and the development of new technologies, such as hot pressing that achieves weight saving, and new materials have been accelerating in the automotive industry. The Automotive Steel Business Unit intends to actively invest in business and logistics endeavors related to new technologies through collaboration with the MITSUI & CO. Group and the development and assignment of specialists.

* The photograph is for illustrative purposes only

Taking on the challenges of driving our business into high-value-added fields in order to contribute to developing an environmentally friendly society

Electromagnetic steel sheet is a high-value-added product that is essential for products used in the electricity and motive power applications, such as transformers and motors. Utilizing robust sales networks established with leading partner companies in Japan and overseas, we sell high-quality electromagnetic steel sheet throughout the world in order to meet the rapidly expanding demand for electric power, and to support the development of the smart society. In response to the rapidly growing demand for transformers and electric motors to meet energy efficiency requirements in particular, we strive to contribute to efficient energy and resource utilization as part of the effort to address environmental issues. As we conduct and develop business, we will continue our dialogue with our stakeholders.



We contribute to the creation of a better society by supporting with our functional logistics of project materials mainly iron and steel construction materials and steel plates

Supply chain that support the development of infrastructure in Japan and overseas

Through unbeatable strengths combining the information collection ability and the logistics network of Mitsui & Co., Ltd., and our expertise-based footwork, we provide supply chain to several projects related to ODA infrastructure development, plant construction of ports, bridges and railroads for emerging countries in the field of indispensable industrial machinery for infrastructure development.



Our proposals of know-how-based functions

We make several proposals through infrastructure-related value chain in Japan and overseas of Mitsui group. For example, our services go beyond a simple supply of materials based on the plant construction drawing, as well as process functions, logistics and process control of the project, we are also providing total solutions based on our long-accumulated know-how and network.

Creating next generation businesses with our partner in Japan and overseas

Our strength is from the basis of "partners" with long-term relationship in Japan and overseas. We work with our partner company at each site of manufacture, processing and logistics for infrastructure fields. We are struggling with issues and needs facing the world, and also striving to build next generation businesses and make up for the demand of infrastructure steel materials as a problem-solving front runner.



Strive to provide stable supply of energy that is environmentally friendly

Liquefied natural gas (LNG) is attracting attention as a clean energy. With the growing global demand for LNG in recent years, many new LNG terminal development plans have been implemented in Japan and overseas. The LNG tanks for storing LNG liquefied at extremely low temperature are among the most important facilities at these terminals. There are only a limited number of LNG tank manufacturers and steel manufacturers in the world who can provide the special heavy plates for the tanks. We provide a stable supply of special heavy plates to the LNG tank manufacturers in Japan as well as abroad. Because the demand for special steel is growing in the LNG industries, we are also working to provide steel materials for other LNG facilities as well as tanks.



Mitsui & Co. Steel Ltd.

Through the efficient distribution of steel material, we will contribute to creating a brighter future across a wide spectrum of industries in collaboration with our partners in Japan and overseas

Using our comprehensive strengths to respond to increasingly complex and sophisticated needs

Steel sheet is employed in all areas of daily life. As a team of professionals engaged primarily in the steel sheet construction materials business, we will use our global sales networks to ensure stable, reliable supplies of products to meet our customers' needs. Also, we will invest and participate in business operations in order to contribute to the development of the steel sheet industry. We aspire to be a total solution provider, drawing on the comprehensive strengths of the Mitsui & Co. group, to present new ideas, such as proposals for composites of steel sheet and other materials and streamlining measures to reduce labor costs.



Making demands with the Mitsui & Co., Ltd. group's integrated strengths

We continue to provide value to both time-honored customers as well as new customers in Japan by taking advantage of the Mitsui Bussan Group's global network. Not limited to handling the distribution through collaborating with steel fabricators cutting and processing steel pipes and plates, we will create jobs and strive to build mutually beneficial strategic relationships, utilizing numerous investment projects of Mitsui Bussan Group as a lever.

Providing comprehensive solutions to food safety and food loss problems

We supply Electrolytic Tin Plate (ETP) and tin-free steel (TFS) not only in Japan but worldwide for use in various types of cans. We respond to food safety needs by supplying high-quality materials, and we are determined to contributing to solving food loss problems through the further popularization of cans that allow longer storage periods. As a solution provider, we globally respond to all of our customers packaging-related needs by fully exercising the comprehensive strengths of the Mitsui & Co. group.



Mitsui & Co. Steel Ltd.

Supply of steel materials produced by advanced technology into different fields

Accommodating the world's bearing manufacturers via high performance logistic system

Bearings are incorporated into the critical parts of all kinds of machines. They receive and support shafts that rotate at high speed and "bear" the fierce friction as the origin of the word "bearing" indicates. Bearings are used in all kinds of machines from automobiles to home appliances to artificial satellites and constitute integral part of industrial development. We globally handle bearings in the forms of steel materials, parts, and products via high performance logistics systems.

Steel wire rods to support a variety of industries. Making the world our stage

Wire rods are steel materials used in a wide range of important applications, including a range of steel wire, wire gauze, bolts, nuts, functional components for the automotive industry, suspension bridge cables and reinforcement materials for tires. While sharing strategies with steel manufacturers and harnessing the strength born through the global network of the Mitsui Group, we are expanding our business to cover a range of industries both in and outside Japan. We are also channeling the energy of the Mitsui Group into addressing the many new requirements arising in the environmental and energy fields.

Supply of stainless steel materials via high quality services

Stainless steel materials are used for a variety of different purposes, such as kitchenware, auto parts, electronic devices, and nuclear power plants. In the stainless steel material segment, we provide a unique one-stop service comprising logistics, processing, and sales in collaboration with our affiliate, MSS Stainless Center Co., Ltd. Moreover, based on the solid sales system with our distributors, we also focus on the development of new uses. We make ongoing efforts to pursue further potential of stainless while accurately capturing user needs.

Supply of stainless steel materials for clean energy systems

We work to carry our social responsibility to contribute to solving global environmental problems through supply of steel stainless steel materials for clean energy systems. For example, we supply nickel tubes used as heating medium for solar thermal energy system, welded stainless steel tubes used for geothermal energy power system and stainless steel plates for LNG tanks production, which help to produce new energy alternative to fossil energy and to reduce CO₂.

Provide value added service through our global network

We adequately capture the market needs through Mitsui & Co., Ltd.'s global network and supply chain and pursue further possibilities of stainless steel material. We provide value added service to our customers all over the world as a global solution provider.

Special steel materials to meet the needs of various industries

Special steel includes a range high-quality, multifunctional steel materials that Japan boasts to the rest of the world. These materials boast a range of special properties born from the elements of the steel itself and various heat treatment and fabrication processes. Harnessing our network with special steel manufacturers, exclusive distributors and steel processing and treatment manufacturers, Mitsui & Co. Steel has established an efficient, special steel supply chain framework to meet the diverse needs of a variety of industries.



By providing steel pipe, tube and other steel products and services that support a stable supply of energy around the world, we actively contribute to the realization of a prosperous and livable society, while keeping a keen eye on the preservation of our global environment.

Contribution to the stable supply of oil and LNG

We contribute to the development of energy globally through our robust and stable supply chain of energy related material. Our product and service offerings include OCTG for upstream oil and gas development, line pipe for production, gathering, transportation, steel plate for offshore structural platforms, specialty steel pipe for refineries and chemical plants and IMR (Inspection, Maintenance and Repair) services.



We strive to realize a sustainable society and contribute to the reduction of CO2 emissions.

As the energy sector shifts, we are also focusing our efforts to supply steel products for renewable energy development. By supplying steel plate for wind towers and IMR (Inspection, Maintenance, and Repair) services, we contribute to the realization of a low-carbon, recycling-oriented society that is in harmony with the environment.

Challenging new value creation and innovation with advanced high-performance materials

By collaborating with our partners, we are challenging new value creation and innovation by providing advanced high-performance material that meet the needs of eco-friendly, reduced maintenance, and reduced touch points post-COVID-19 Pandemic. As an example, we are working diligently to expand the special steel business that utilizes the "smiLLe™" system in the refinery and petrochemical industries. The business model of "smiLLe™" is a new business model that collaborates with process licensors in the early stages of equipment design to provide steel materials and services that can avoid corrosion of process equipment and significantly reduce maintenance costs.



Providing our global and high-functioning supply chain management leveraged by the conglomerate strength of the Mitsui & Co. Group

In cooperation with our overseas and domestic partners, we leverage the strength of Mitsui & Co. Group's global network to provide reliable logistics in order to meet each customer's needs.

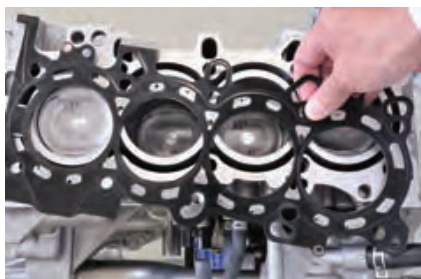


Mitsui & Co. Steel Ltd.

From WEST - JAPAN to the rest of the world

We contribute to further development of the West-Japan area with the stable supply and positive proposition of the steel materials to customers and can support customers' overseas business expanding through Mitsui & Co., Ltd. Group's global network.

In West-Japan area, there are a lot of variety traditional manufacturing industries ; shipbuilding companies, automotive parts manufacturers, construction/industrial machinery parts manufacturers; which have advanced technologies. We have already equipped to handle customers' needs to quickly and appropriately service the diverse needs of this market with the expansive domestic and global network of the Mitsui Group, and provide the best possible match of suppliers and steel manufacturers to meet customers' requests.



Contributing to the growth of local industry and stimulating the local economy through the supply of materials and services

From the Chubu region to the rest of Japan

Chubu region is located in the important place of traffic. People · goods · money coming from various areas cross each other in this region. It has a lot of local industries which have long history and tradition. Though three prefectures, namely Aichi, Gifu and Mie, are said to have about 10% share of gross domestic product, they have about 18% share of the total product shipment in Japan. A range of steel products manufactured locally are distributed all over Japan. We are looking to meet demand in a wide variety of fields, including products for construction, heavy machinery, such as construction equipment, automotive parts and household appliances and equipment etc. Harnessing the strength of the Mitsui Group, we are playing our role in supporting the overseas and global expansion of our clients.

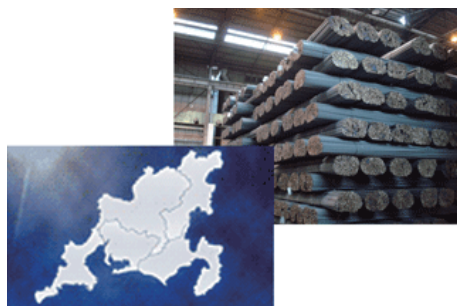


The supply of materials through the network

The automobile industry representing our country is located in Chubu region. Automobiles produced in this region are shipped from the port of Nagoya to many countries in the world. The automobile export accounts for approximately 50% of the total export from the port of Nagoya. It is No.1 among all Japanese ports in terms of value and number of automobiles shipped. The manufacturing industries, i.e. the automobile industry etc., have global competitiveness and support vigorous Chubu. Harnessing our network with coil centers and exclusive distributors, Mitsui & Co. Steel offers effective distribution services in an effort to support the local manufacturing industry by supplying steel materials, including the automotive industry, power industry and the production of construction materials, containers and steel furniture etc.

Growing together with the local community

A variety of construction projects supports the growth of the economy in Chubu region. Construction of many projects for earthquake and tsunami countermeasure, thermal power & solar power generation, large-sized business complex, linear-motor train line and highway is being planned and those projects are expected to produce economic benefit. Mitsui & Co. Steel caters to the diverse construction and civil engineering fields in the area of disaster prevention and local development - areas of growing importance for the future, the housing industry and the new field of renewable energy.



Corporate Profile

■ Company Name	Mitsui & Co. Steel Ltd.
■ Foundation	April 1, 2008
■ Representative	Satoru Utsunomiya, President
■ No. of employees	302
■ Head Office	35F, Akasaka Biz Tower, 5-3-1 Akasaka, Minato-ku, Tokyo 107-6335 TEL. +81-3-5544-5001 (Pilot Number) FAX. +81-3-5544-6451
■ No. of business offices	3 bases
■ Capital	10.299 billion yen
■ Stockholder	MITSUI & CO., LTD. 100%
■ Business Areas	<Automotive & Electrical Steel> Automotive steel Automotive parts steel Electrical steel <Project Construction Materials> Steel bars Shaped steel Steel plate Steel frames Civil engineering products Building materials Project development <Infrastructure Steel Products> Flat steel Steel sheet Tinplate Steel Pipe <Performance Steel Products> Stainless steel Special steel Bearings Bars Wire <Energy Steel Products> OTCG Line Pipe <Transportation Infrastructure Products> Rail
■ Major Banks	Sumitomo Mitsui Banking Corporation Mizuho Bank, Ltd.
■ Official Website	http://www.mitsui-steel.com/en (As of April 1, 2021)



Domestic Network

Tokyo Head Office

35F, Akasaka Biz Tower, 5-3-1

Akasaka, Minato-ku, Tokyo 107-6335

TEL. +81-3-5544-5001 (Pilot Number) FAX. +81-3-5544-6451

Chubu Business Unit

Nagoya Mitsui Bldg North Building., 4-8-18,

Meieki, Nakamura-ku, Nagoya, Aichi

450-0002

TEL: +81-52-584-2207 FAX: +81-52-584-2197

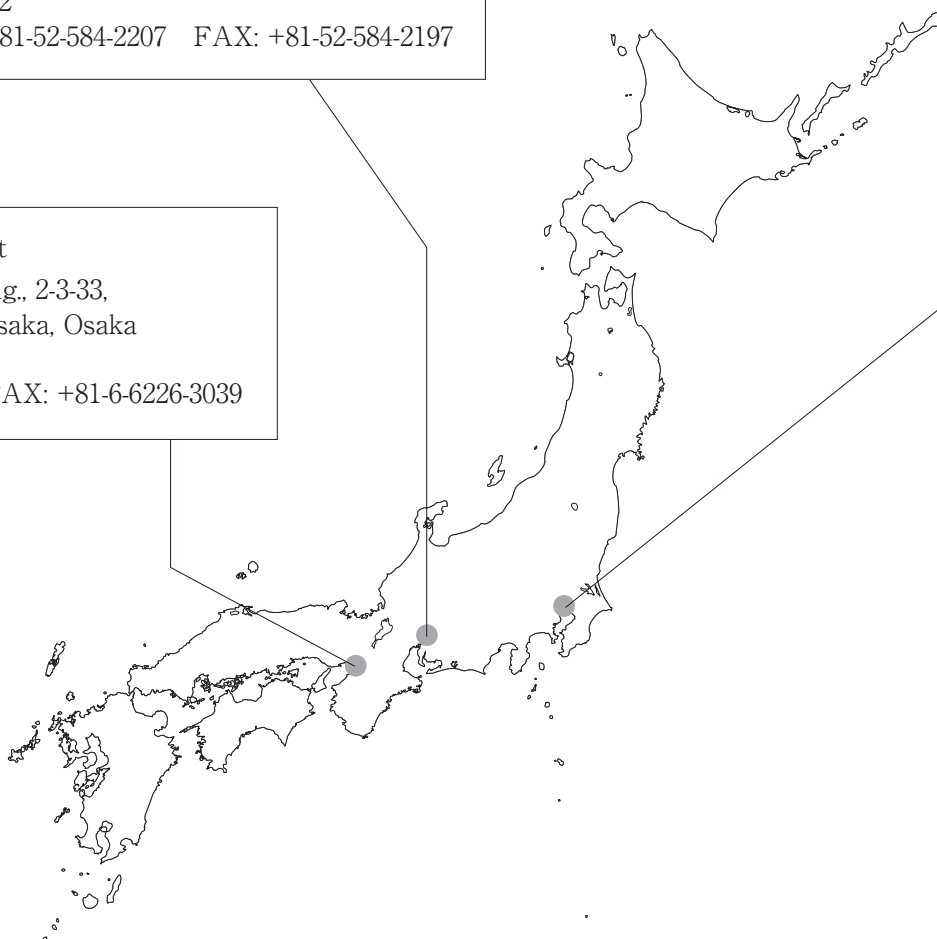
West-Japan Business Unit

Osaka Mitsui Bussan Bldg., 2-3-33,

Nakanoshima, Kita-ku, Osaka, Osaka

530-0005

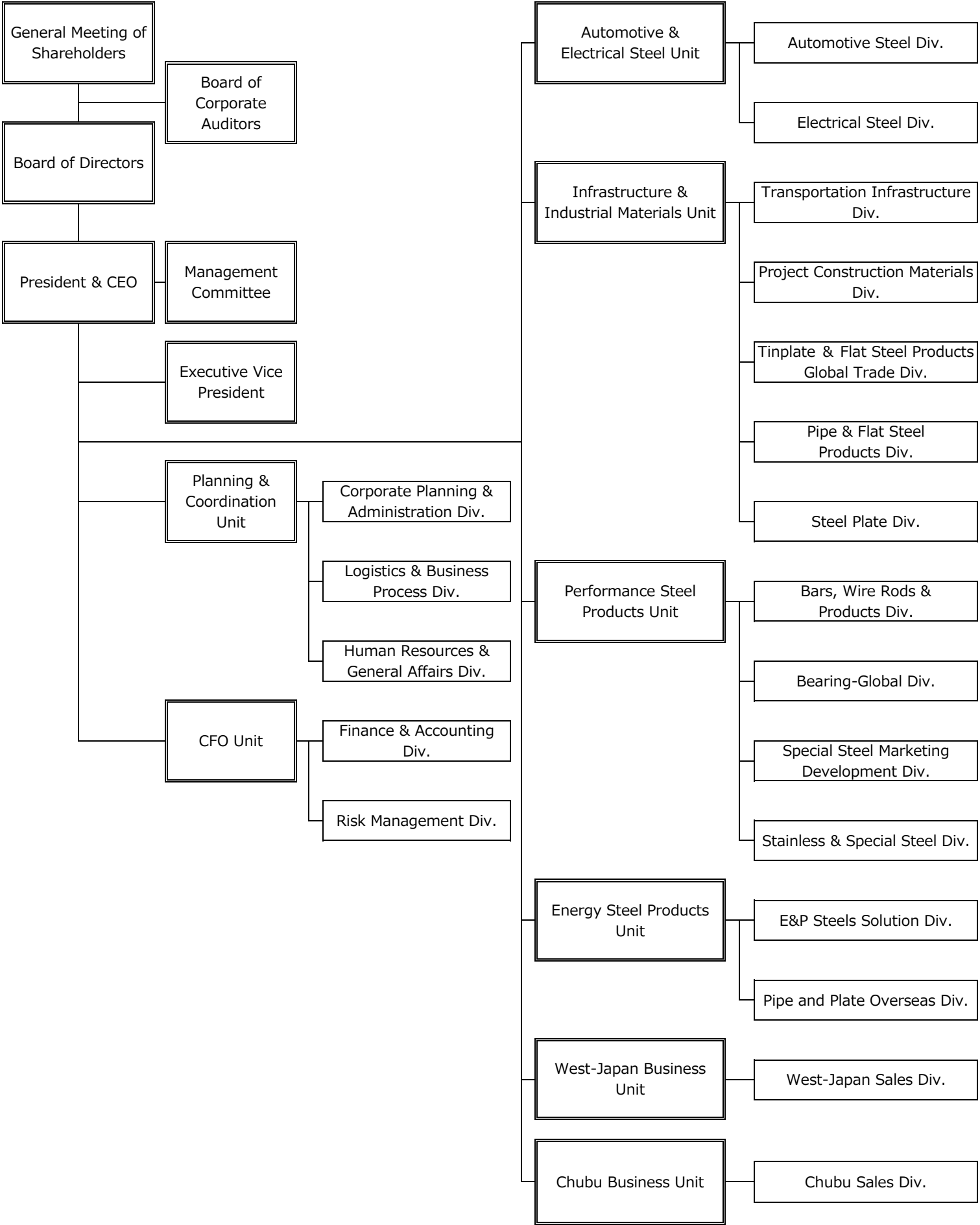
TEL: +81-6-6226-3013 FAX: +81-6-6226-3039



Mitsui & Co. Steel Ltd.

Mitsui & Co. Steel Ltd. Organization chart

May 1, 2021





Mitsui & Co. Steel Ltd.